

NEW & IMPROVED

X5C

X-ray Inspection System

COMPACT, EASY-TO-USE X-RAY MODEL, IDEAL FOR FIRST-TIME USERS



Designed for packed convenience foods, ready meals, and small end of line packaged goods, the X5C is LOMA's smallest X-ray system and newly enhanced. An X-ray built under LOMA's 'Designed to Survive' philosophy, offering the perfect entry-level opportunity to go beyond metal detection to X-ray technology with the benefit of integrity checks and more, all within a small footprint for no compromise inspection.

KEY ADVANTAGES

- **First-time friendly**, affordable and easy use X-ray system, designed for quick user proficiency with minimal training so you can get up and running in no time.
- **A comprehensive system**, that allows food producers to upgrade from metal detection to X-ray technology, enabling reliable detection of metal, bone, glass, and dense plastics - even in foil or metallised packaging.
- **Compact**, this X-ray system is designed for space-constrained production lines, with a total length of just 1,000 mm.
- **Easy and efficient cleaning**, featuring new tool-free belt and curtain removal for effortless and fast cleaning, reducing production line interruptions.

“The X5C is an ideal inspection machine because it can detect more than just metal. Our team and production line adapted to the X-ray technology quickly and easily, helping us reduce false rejects.”

FACTORY MANAGER,
READY MEAL PRODUCER, UK



LOW COST OF OWNERSHIP

Benefit from low running power, minimal consumable parts, and excellent tank life for an affordable X-ray

METAL DETECTOR UPGRADE

Inspect beyond metal, by upgrading to X-ray to check products packaged in foil or heavy metalized film packs

DETECTION CAPABILITIES

Reduce false rejects, with improved detection performance

Introducing the **NEW** and **IMPROVED** **X5C X-ray System**

The newly enhanced compact model delivers all the essential benefits of X-ray inspection, giving food producers access to a cost-effective, user-friendly system with a variety of reject options. As retailer codes of practice continue to become more stringent, the X5C is ideally suited for businesses looking to move beyond metal detection and incorporate comprehensive product integrity checks.

With its low cost of ownership, this X-ray solution represents the perfect step up for manufacturers aiming to achieve a higher level of Critical Control Point (CCP) protection.



X5C COMPACT X-RAY

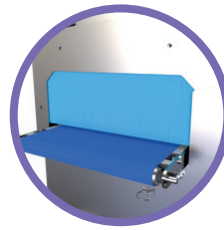
X5C X-RAY KEY ENHANCEMENTS



Improved detection reduces false reject rate



Product integrity for count & missing item checks



Lead-free construction



Speeds of up to 70m/min



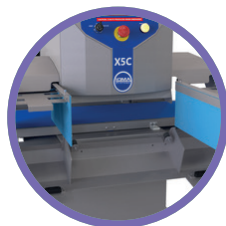
Larger 10.1" capacitive screen



Easier to clean tube-free frame



Tool-free belt removal for easy maintenance



Quick release curtains for quicker & better cleaning

Scan me to find out more



To contact our experts, call **+44 1252 893300** or email enquiries@loma.com

www.loma.com

Loma Systems is a registered trademark of Illinois Tool Works Inc. (ITW). Other names, logos, icons and marks identifying our products and services referenced herein are trademarks of ITW and may not be used without the prior written permission of ITW. Other product and company names listed are trademarks or trade names of their respective companies. Copyright © 2026 Illinois Tool Works Inc. All rights reserved. All of the specifications shown in this document are subject to change without notice.