



IQ4 - Rectangular Metal Detector Search Head

Designed for Food & Packaging Industries

The New IQ4 series of Variable Frequency metal detector search heads are designed to inspect products for metal contaminants in the food and packaging Industries. They can be purchased as a search head that can be integrated into a larger packaging line or as a standalone conveyor unit with automatic reject stations.

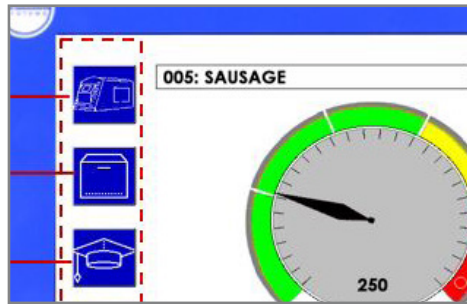
Product Highlights

- Auto-Learn feature rapidly delivers great detection sensitivities out of the box and provides more line uptime than ever before
- Variable-frequency technology (31 to 882 kHz) provides best detection performance for even difficult to handle metallized-film packaging
- Simplified running interface provides instant machine status
- Multiple product memories for rapid product change over and data storage
- Graphical vector display helps delivers perfect production setups and advanced detection diagnostics
- Password protected user accounts provides secure access to functions critical to each level (Operator, Supervisor, Quality and Engineer)
- Full range of aperture widths and heights to suit products being scanned



7" Color Touchscreen

Standard across all of the IQ4 range, the industry leading 7" touchscreen enhances usability over previous generation metal detectors.



Simplified User Interface

The newly designed interface makes light work of setting, running and maintaining the IQ4 range and helps to minimize operator errors

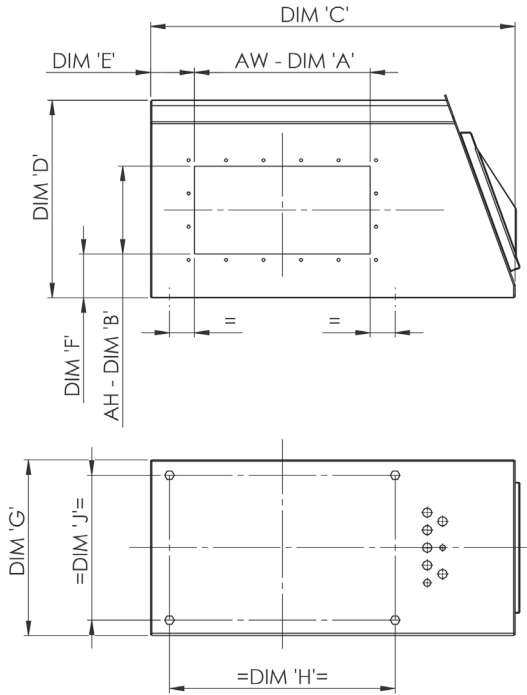


Robust "Beyond" IP69K Rating

An improved lip, screen, and new blue sealing arrangement, combined with ultra-harsh mechanics proven from the IQ3+ range, make this one of the toughest and factory-friendly metal detectors on the market



Technical Specification



Dimension A = Aperture Width
Dimension B = Aperture Height

Material of Construction	304 Brushed stainless steel
True Variable Frequency	31 to 882 kHz
Supply Voltages	85 to 265 V, single phase 50/60 Hz, neutral & Earth
Power Consumption	20 VA
Temperature Range	-10 to + 40 °C (14 to 104 °F)
Humidity	0 to 95 % Relative Humidity (Non-condensing)
Environment	IP69K
PVS Enabled	Yes
Ethernet Capability	Yes
USB Capability	Yes

Head Dimensions

Preferred Aperture Width 'A'	250, 350, 450, 550, 650, 750, 850, 950, 1050, 1150, 1250									
Preferred Aperture Height 'B'	100	150	200	250	300	350	400	450	500	550
C	A + 430				A + 530		A + 670		A + 810	
D	392,5	400	450	500	650	700	850	900	1050	1100
E	100				150		200		250	
F	130	100			150		200		250	
G	300		400		500		600		700	
H	A + 114									
J	230		330		430		530		630	

All dimensions in mm. The table shows the most common aperture widths and heights only, and please note that not all aperture heights are available with the aperture widths stated. Other sizes, including custom sizes are available depending on your application. Please consult your local representative for any further information.

Other Features

- Rugged construction using brushed 304 stainless steel
- Unique clam-shell designed case and coil geometry that delivers unsurpassed levels of immunity
- Extensive data logging and reporting via USB or Ethernet for HACCP and retail compliance
- 32-bit digital signal processing for enhanced contaminant detection
- Can be integrated into a conveyor system to achieve High Compliance Retail Specification
- For horizontal mounting. Available in other configurations (including vertical mounting for tall products and with remote control box), please consult your local representative for further details.



An ITW Company

www.loma.com

Tel: +44 1252 893300 (UK) | +1-800-872-LOMA (North America)

Metal Detection | Checkweighing | X-Ray Inspection

Loma Systems is a registered trademark of Illinois Tool Works Inc. (ITW). Other names, logos, icons and marks identifying our products and services referenced herein are trademarks of ITW and may not be used without the prior written permission of ITW. Other product and company names listed are trademarks or trade names of their respective companies. Copyright © 2018 Illinois Tool Works Inc. All rights reserved. All of the specifications shown in this document are subject to change without notice.

In association with

