



## *X<sup>4</sup> X-ray Inspection Systems*

[www.loma.com](http://www.loma.com)

Versatile, proven X-ray detection for the food and packaging industries



- **Versatile** Models and reject systems to suit a wide range of packaged product
- **Easy to use** Intuitive full color touch-screen
- **Sensitive** Auto calibration, which requires no programming and maximizes performance
- **Fast** Belt speeds in excess of 96 m/min (315 ft/min) without loss in performance
- **Reliable** Heavy duty conveyor components, built for 24/7 operation

Metal Detection

X-ray Inspection

Checkweighers

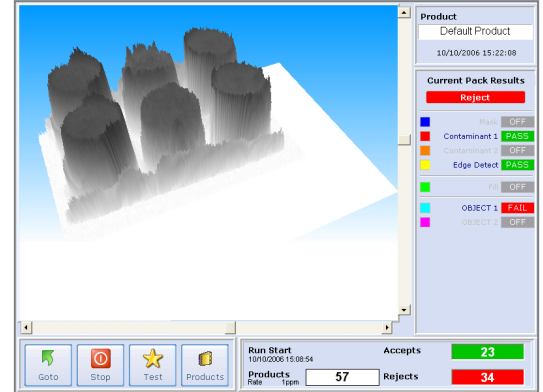
Data Capture

*Designed to Survive*



# X-ray Inspection Systems

- Finish: 304 stainless steel with bead blast finish
- Typical Line Height: 900mm ± 50mm    35" ± 2"
- System Length: 2000mm    80"
- Belt Width: 300/500/600mm    12/20/24"
- Supply Voltages: 230/1ph/50Hz N+E or 110/1ph/60Hz N+E
- Air Supply: 5 to 8 bar    80 to 100 psi
- Reject Options: Air Blast single or twin, Pusher others to order
- Environment: IP55    NEMA 12/4X
- Belt Type: Flat (food quality) belt
- Standard Inclusions: Quick release belt, Height adjustable feet, Mass Measurement, Missing product, Shape recognition, Image and report archiving, Hinged interlocked covers, Variable speed
- Options: Reject confirmation, Bin full sensing, Reject bin, Survey meter, Remote diagnostics, Lockable wheels, LomaEnet, Modem, IP66 Washdown



## Technical Specification

Industrial Grade PC with modem, Ethernet and front access USB port

Embedded Windows XP operating system

Digitally controlled WASC (Wide Angle, Self Cooled) high performance X-ray tank. (Tube life estimated at 7 to 10 years)

Unique USB high speed, high stability, detector array with 0.8mm diode pitch

Computer vision system utilising image processing and morphological techniques

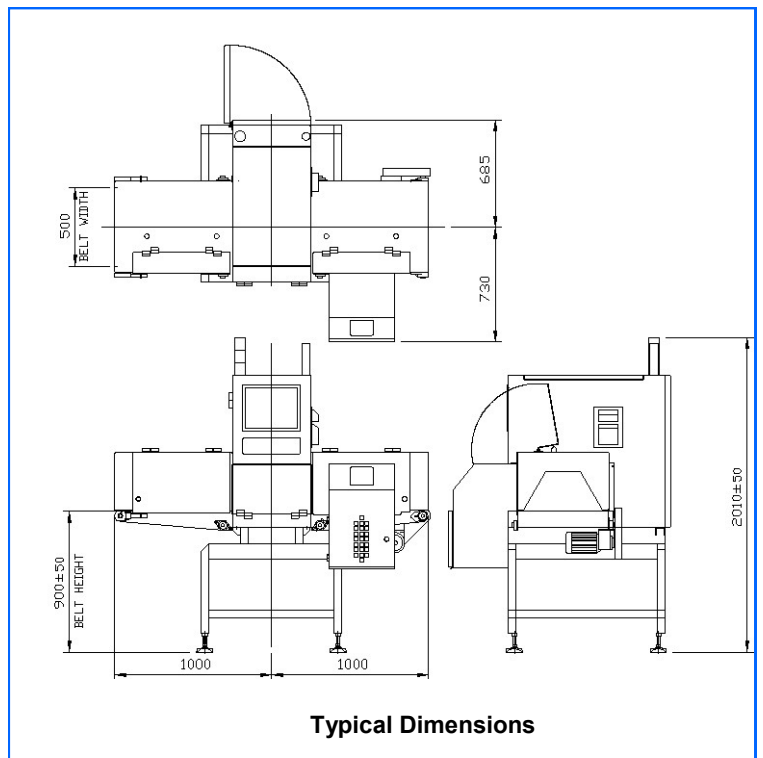
Pass Key protected set-up

USB Report and image archiving

Full diagnostic and system health monitoring with date and time stamp archiving, including remote support tools

Usage monitoring with planned maintenance prompts

Modular system with speed digital communications between major components



USA — Loma Systems, 283 East Lies Road, Carol Stream, IL 60188  
 Canada — Loma Canada, 333 Wyecroft Road, Unit 11, Oakville, Ontario, L6K 2H2

**Tel:** 1-800-USA-LOMA  
**Tel:** (905) 842 4581

**Fax:** (630) 588-1394  
**Fax:** (905) 842 3460

**Email:** sales@loma.com  
**Email:** lomacanada@loma.com