



X⁴ Bulk X-ray Inspection Systems

www.loma.com

Versatile, proven X-ray detection for the food and packaging industries



- **Versatile** Models and reject systems to suite a wide range of packaged product
- **Easy to use** Intuitive full color touch-screen
- **Sensitive** Auto calibration, which requires no programming and maximizes performance
- **Fast** Typical throughput in excess of 10T/hr without loss in performance
- **Reliable** Heavy duty conveyor components, built for 24/7 operation

Metal Detection

X-ray Inspection

Checkweighers

Data Capture

Designed to Survive



X-ray Inspection Systems

Finish: 304 stainless steel with bead blast finish

Typical Line Height: 900mm ± 50mm 35" ± 2"

Typical System Length: 2500mm 80/99"

Belt Width: 300/500/600mm 12/20/24"

Supply Voltages: 230/1ph/50Hz N+E or 110/1ph/60Hz N+E

Air Supply: 5 to 8 bar 80 to 100 psi

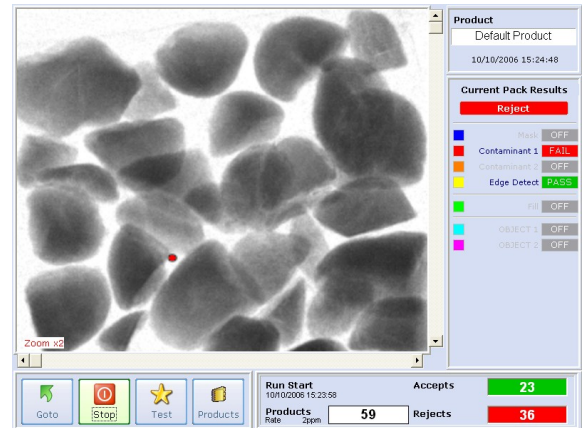
Reject Options: Single or Multilane lift or drop flap

Environment: IP 55 NEMA 12

Belt Type: Flat (food quality) belt

Standard Inclusions: Quick release belt, Height adjustable feet, Image and report archiving, Hinged interlocked covers, Variable speed

Options: Reject confirmation, Bin full sensing, Reject bin, Survey meter, Remote diagnostics, Lockable wheels, LomaEnet, Modem, Washdown



Technical Specification

Industrial Grade PC with modem, Ethernet and front access
USB port

Embedded Windows XP operating system

Digitally controlled WASC (Wide Angle, Self Cooled) high performance X-ray tank. (Tube life estimated at 7 to 10 years)

Unique USB high speed, high stability, detector array with 0.8mm diode pitch

Computer vision system utilising image processing and morphological techniques

Pass Key protected set-up

USB Report and image archiving

Full diagnostic and system health monitoring with date and time stamp archiving, including remote support tools

Usage monitoring with planned maintenance prompts

Modular system with speed digital communications between major components

USA — Loma Systems, 283 East Lies Road, Carol Stream, IL 60188

Canada — Loma Canada, 333 Wyecroft Road, Unit 11, Oakville, Ontario, L6K 2H2

Tel: 1-800-USA-LOMA

Tel: (905) 842 4581

Fax: (630) 588-0900

Fax: (905) 842 3460

Email: sales@loma.com

Email: lomacanada@loma.com