



# LOMA TEST STICKS

## METAL DETECTOR, X-RAY & NEEDLESEARCH TEST SAMPLES

Ferrous • Non-Ferrous • Stainless Steel • Glass • Ceramic

Regular performance testing of Metal Detection and X-ray inspection equipment is an essential part of a quality management system. Confirming the accurate performance of your systems, both prior to and during production runs is the only sure way to ensure your line is compliant and operating to specification.

## Compliance Requirements

HACCP and GMP compliance requires that inspection equipment is installed at critical control points and is routinely QA tested with the results documented.

## Loma Test Samples

Test samples are constructed from a fully calibrated precision ground ball encased in plastic. You can be sure that by using a fully calibrated Loma Test Sample you will be demonstrating your commitment to quality and due diligence:

- Colour coding system for simple visual verification
- Calibrated and certified test sticks
- Certification number detailed on every piece

## Food Grade

All wands carry the following information:

- Loma Systems part number
- Contaminant material type
- Ball size
- 'Conforms to QH002' (x-ray only indicates 'QH002')

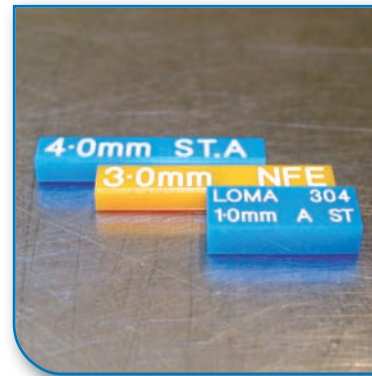


### Test Sticks

Colour coded plastic test sticks  
75mm x 10mm x 10mm.

Available in ball sizes;  
Ferrous / Non-ferrous  
0.8mm - 5.00mm

ST/STL 304 / ST/STL 440C  
1.00mm - 8.00mm



### Test Tablets

Colour coded plastic test tablets  
23mm x 10mm x 5mm.

Available in ball sizes;  
Ferrous  
0.3mm - 2.5mm  
Non-ferrous  
0.8mm - 3.0mm

ST/STL 304 / ST/STL 440C  
0.39mm - 1.5mm



### Test Flexi

Colour coded plastic test wands  
360mm x 10mm x 10mm.

Available in ball sizes;  
Ferrous - Non-ferrous  
1.00mm - 4.00mm

ST/STL 304  
1.00mm - 4.00mm  
ST/STL 440C  
1.00mm - 4.00mm



### Test Ball

Colour coded plastic test balls  
40mm x 35mm x (diameter) 12.5mm.

Available in ball sizes;  
Ferrous  
0.6mm - 3.0mm  
Non-ferrous  
0.8mm - 3.5mm

ST/STL 304/ST/STL 440  
0.9mm - 2.5mm / 0.9mm - 5.0mm



### X-ray

Colour coded plastic test pieces  
49mm x 10mm x 10mm.

Available in ball sizes;  
Ceramic  
2.00mm - 6.35mm

Glass  
2.00mm - 6.35mm  
ST/STL 304  
0.8mm - 4.00mm

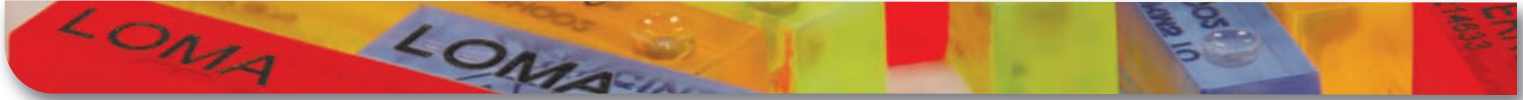


### Needlesearch

Coded plastic test cards  
87mm x 54mm x 1mm.

Available in ball sizes;  
Ferrous  
1.00mm - 1.5mm

*Designed to Survive*



## Conformity of Product

For ease of use, our test pieces have a colour-coded description detailing the size and type of the contaminant inside. They are coloured in highly visible red, green, orange & blue for ferrous, non-ferrous & stainless steel respectively. (We supply a range of test sticks, test wands, test spheres, test rods, test pucks and test balls for various applications).

Each test piece is certified to have been manufactured in accordance with guidelines set out under BS EN ISO 9001 and under calibration protocols controlled by the United Kingdom Accreditation Society (UKAS Calibration).

## Metal Detecting Conveyor Wand Table 1

Classification	Material Type	Code
Ferrous	Chrome Steel	AISI 521000 EN31
Non Ferrous	Brass	Cabra 260
Non Ferrous	Phosphor Bronze	N/A
Buckshot	Buckshot	N/A
Stainless Steel	304 (Annealed)	AISI 304 EN58 E
Stainless Steel	404	AISI 440C
Stainless Steel	302	AISI 302 EN58 A
Stainless Steel	316	AISI 316
Stainless Steel	304 or 304 L	AISI 304 EN58E AISI304L

## Ball Materials for X-ray Detection Table 2

Classification	Material Type	Code
Stainless Steel	302/304/316/440	As in Table 1
Glass Balls	Clear Glass	N/A
Ceramic	Aluminium	N/A

## Consistent Standards

Regular and consistent testing is an essential part of a product quality management system including ISO 9000, Hazard Analysis Critical Control Point (HACCP) and Good Manufacturing Practice (GMP). Loma Systems offer a wide range of individual test sticks and kits to simplify this process.

Loma test sticks undertake strict quality control procedures to ensure that its manufacturing and assembly processes provide the correct size bearing and description on each test stick supplied.

## Metal Detecting Conveyor Wand Table 3

Classification	Material Type	Wand Colour & Code
Ferrous	Chrome Steel	Clear Red Perspex
Non Ferrous	Brass	Clear Green Perspex
Stainless Steel	304 (Annealed)	Clear Blue Perspex
Stainless Steel	316	Clear White Perspex
Stainless Steel	440 C	Clear Yellow Perspex

## Metal Detecting Conveyor Wand Table 4

Classification	Material Type	Wand Colour & Code
Ferrous	Chrome Steel	Red Perspex 960
Non Ferrous	Brass	Yellow Perspex 229
Stainless Steel	304 (Annealed)	Blue Perspex 727
Stainless Steel	316	Opal Perspex 069
Stainless Steel	302	Orange Perspex 363
Stainless Steel	440 C	Blue Perspex 750
Non Ferrous	Phosphor Bronze	Brown Perspex 543
Non Ferrous	Buckshot	Grey Perspex 9958
Stainless Steel	304 or 304 L	Red Perspex 433

Metal Detectors X-ray Inspection Systems

[www.loma.com](http://www.loma.com)

Tel: +44 (0)1252 893300

Checkweighers Data Capture Systems

*Designed to Survive*