



## ***IQ+ Pharmaceutical Metal Detector***

***www.loma.com***

Versatile, proven metal detection systems for the pharmaceutical industry. With full color graphical touch screen.



- **Compact** Installed easily and quickly after the de-duster or tablet press
- **Safe** The failsafe reject mechanism ensures precise rejection of contaminated product
- **Sensitive** Advanced signal processing provides unsurpassed levels of detection
- **Hygienic** Product contact parts can be quickly dismantled and cleaned
- **Reliable** Robust design ensures long, reliable performance on the line

Metal Detection

X-ray Inspection

Checkweighers

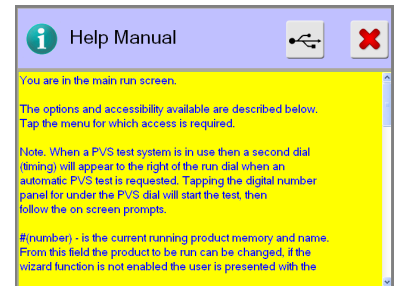
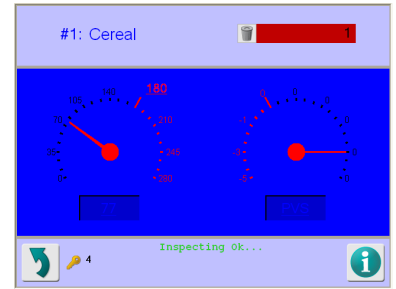
Data Capture

***Designed to Survive***



# IQ+ Pharmaceutical Metal Detection

Finish:	304 stainless steel with bead blast finish
Aperture Sizes:	100mm x 20mm(4" x .78") 100 x 38mm (4" x 1.5")
Supply Voltage:	110/115/200/220/230V 50/60Hz
Input Height:	530mm to 835mm (20.9" to 32.9")
Output Height:	240mm to 680mm (9.45" to 26.8")
Height Adjustment:	Gas strut assisted
Tilt Angle:	45° maximum
Reject Type:	High speed electrical solenoid driven flap
Throughput:	Up to 10,000 tablets/min
Cleaning Regime:	Wipe/blow machine Wash inlet/outlet chutes
Options:	Multicolor LED Stacklight FDA Validation Documentation



## Technical Specification

IQ OQ Validation Document

PVS to aid HACCP compliance

Various communication options to suit plant integration protocols

Direct transmitter drive to eliminate thermal drift

High field strength to eliminate external interference and deliver the ultimate in noise free detection

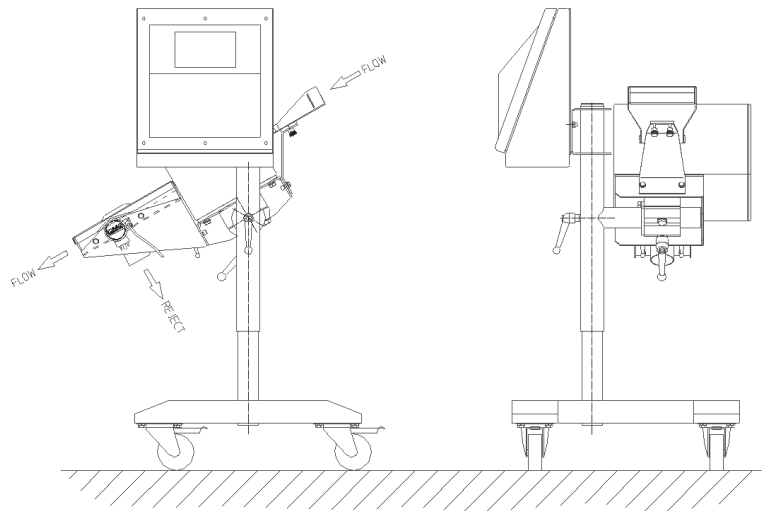
32-bit digital signal processing for enhanced contaminant detection

Standard apertures on rapid delivery

1MHz operating frequency for peak high-grade stainless steel detection

Extensive on board reporting facilities meaning HACCP and retailer compliant, Ethernet and OPC compatible

Data and product backed up and stored via USB



**USA** — Loma Systems, 283 East Lies Road, Carol Stream, IL 60188

**Canada** — Loma Canada, 333 Wycroft Road, Unit 11, Oakville, Ontario, L6K 2H2

**Tel:** 1-800-USA-LOMA  
**Tel:** (905) 842 4581

**Fax:** (630) 588-0900  
**Fax:** (905) 842 3460

**Email:** sales@loma.com  
**Email:** lomacanada@loma.com