



## ***IQ<sup>+</sup> FreeFall Metal Detection***

[www.loma.com](http://www.loma.com)

Versatile, proven metal detection systems for the food, pharmaceutical and chemical industries. With full colour graphical touch screen.



- **Versatile** Range of apertures to suite a wide range of pipe sizes
- **Easy to use** Automatic product learn ensures maximum sensitivity without adjustment
- **Sensitive** Advanced signal processing provides unsurpassed levels of detection
- **Flexible** Multiple product memories for rapid product change over and data storage
- **Efficient** High speed reject ensure positive contaminant rejection with minimum wastage

Metal Detection

X-ray Inspection

Checkweighers

Data Capture

***Designed to Survive***



# IQ<sup>+</sup> FreeFall Metal Detection

Finish: 304 stainless steel with brushed finish

Pipe Diameters: 100mm 150mm 200mm

Typical System Lengths: (Foot Mounted) 790mm 883mm 1083mm

Throughput: \*6 T/hr \*13.5 T/hr \*24 T/hr

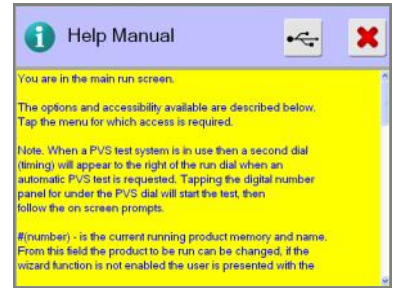
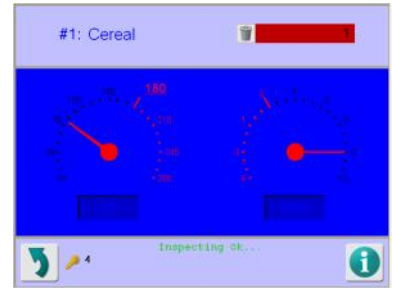
Supply Voltages: 230V 1ph N+E or 110V 1ph N+E

Air Supply: 5 to 8 bar

Reject Types: Bucket reject with sealed reject port

Environmental Protection: IP 65

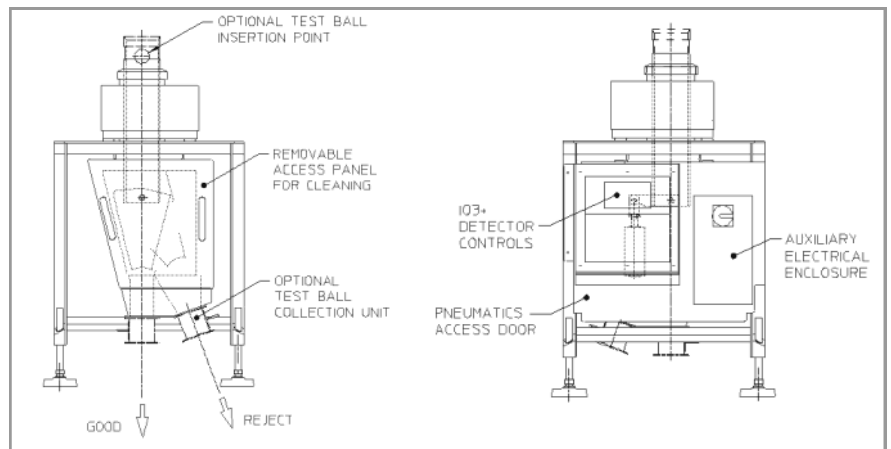
Options: Remote control box Floor or ceiling mount  
 Beacon stanchion Reject confirm  
 Test retrieval kit LomaEnet  
 Serial link PVS Beacon



## Technical Specification

- PVS to aid HACCP compliance
- Various communication options to suit plant integration protocols
- Direct transmitter drive to eliminate thermal drift
- High field strength to eliminate external interference and deliver the ultimate in noise free detection
- 32-bit digital signal processing for enhanced contaminant detection
- Standard apertures on rapid delivery
- Extensive on board reporting facilities meaning HACCP and retailer compliant, Ethernet and OPC compatible
- Data and product backed up and stored via USB

| Head Aperture Sizes               |   |
|-----------------------------------|---|
| For tight spaces like bag makers  |   |
| Catalogue FreeFall<br>mm diameter | Standard SlimLine<br>(Contained Field available)<br>mm diameter |
| 129                               | 120   |
| 173                               | 169   |
| 239                               | 180   |
|                                   | 219   |
|                                   | 270   |
|                                   | 320   |
|                                   | Case = 134mm to flow  |



Loma Systems, Summit Ave, Southwood, Farnborough, Hampshire, GU14 0NY

Tel: +44 (0)1252 893300

Fax: +44 (0)1252 513322

Email: sales@loma.co.uk

