



## ***IQ+ FreeFall Metal Detection***

[www.loma.com](http://www.loma.com)

Versatile, proven metal detection systems for the food, pharmaceutical and chemical industries. With full color graphical touch screen.



- **Versatile** Range of apertures to suite a wide range of pipe sizes
- **Easy to use** Automatic product learn ensures maximum sensitivity without adjustment
- **Sensitive** Advanced signal processing provides unsurpassed levels of detection
- **Flexible** Multiple product memories for rapid product change over and data storage
- **Efficient** High speed reject ensure positive contaminant rejection with minimum wastage
- **Safe** ATEX category 3D approved for use in zones 22

Metal Detection

X-ray Inspection

Checkweighers

Data Capture

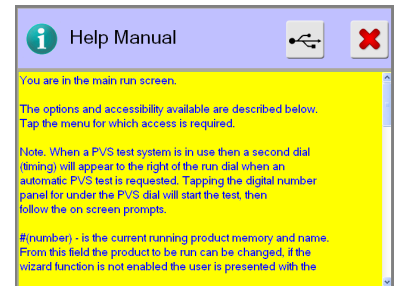
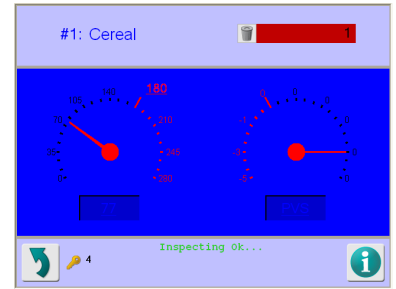
***Designed to Survive***



# IQ+ FreeFall Metal Detection

- Finish: 304 stainless steel with bead blast finish
- Pipe Diameters: 100mm (4") 150mm (6") 200mm (8")
- Typical System Lengths: 790mm (31") 860mm (33.8") 1080mm (42.5")  
(Foot Mounted)
- Throughput: 6 tons/hr, 13.5 tons/hr, 24 tons/hr
- Supply Voltages: 230V 1ph N+E or 110V 1ph N+E
- Air Supply: 5 to 8 bar (72 to 116 psi)
- Reject Types: Trouser Leg reject with sealed reject port
- Environmental Protection: IP 65
- Options:
 

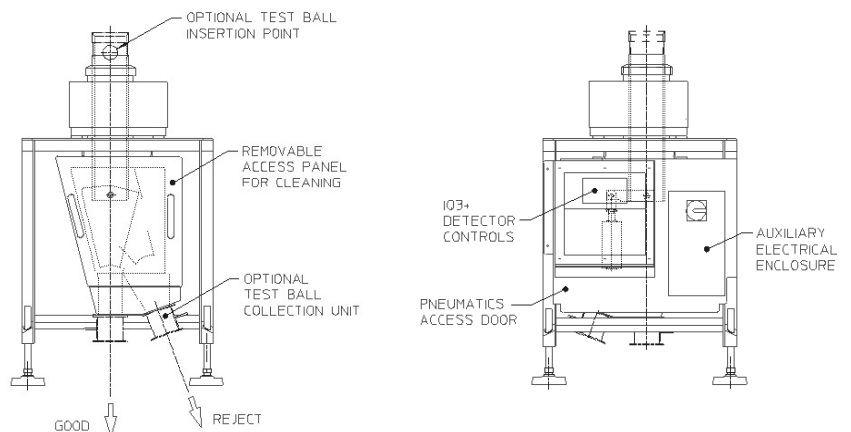
Remote control box	Floor or ceiling mount
Multicolor LED Stacklight	Reject confirm
Inline Test Kit	LomaEnet and OPC packages
Reject Confirmation	Anti-blowback device
Swivel Mount	Reject Confirmation



## Technical Specification

- PVS to aid HACCP compliance
- Various communication options to suit plant integration protocols
- Direct transmitter drive to eliminate thermal drift
- High field strength to eliminate external interference and deliver the ultimate in noise free detection
- 32-bit digital signal processing for enhanced contaminant detection
- Standard apertures on rapid delivery
- Extensive on board reporting facilities meaning HACCP and retailer compliant, Ethernet and OPC compatible
- Data and product backed up and stored via USB

Available Head Aperture Sizes	
Standard Head mm diameter	SlimLine Head mm diameter
129	120
173	169
239	219



**USA** — Loma Systems, 283 East Lies Road, Carol Stream, IL 60188  
**Canada** — Loma Canada, 333 Wycroft Road, Unit 11, Oakville, Ontario, L6K 2H2

**Tel:** 1-800-USA-LOMA  
**Tel:** (905) 842 4581

**Fax:** (630) 588-0900  
**Fax:** (905) 842 3460

**Email:** sales@loma.com  
**Email:** lomacanada@loma.com